

# Good practices in collaborative management and monitoring

Day 2, 09.00-10.00

UArctic course, Nuuk, October -2019





# Overview of good practises in collaborative management and monitoring programmes

- What do we mean with "Good practises"?
- From where are the experience drawn?
- What are the context?
- What are the good practises covered?





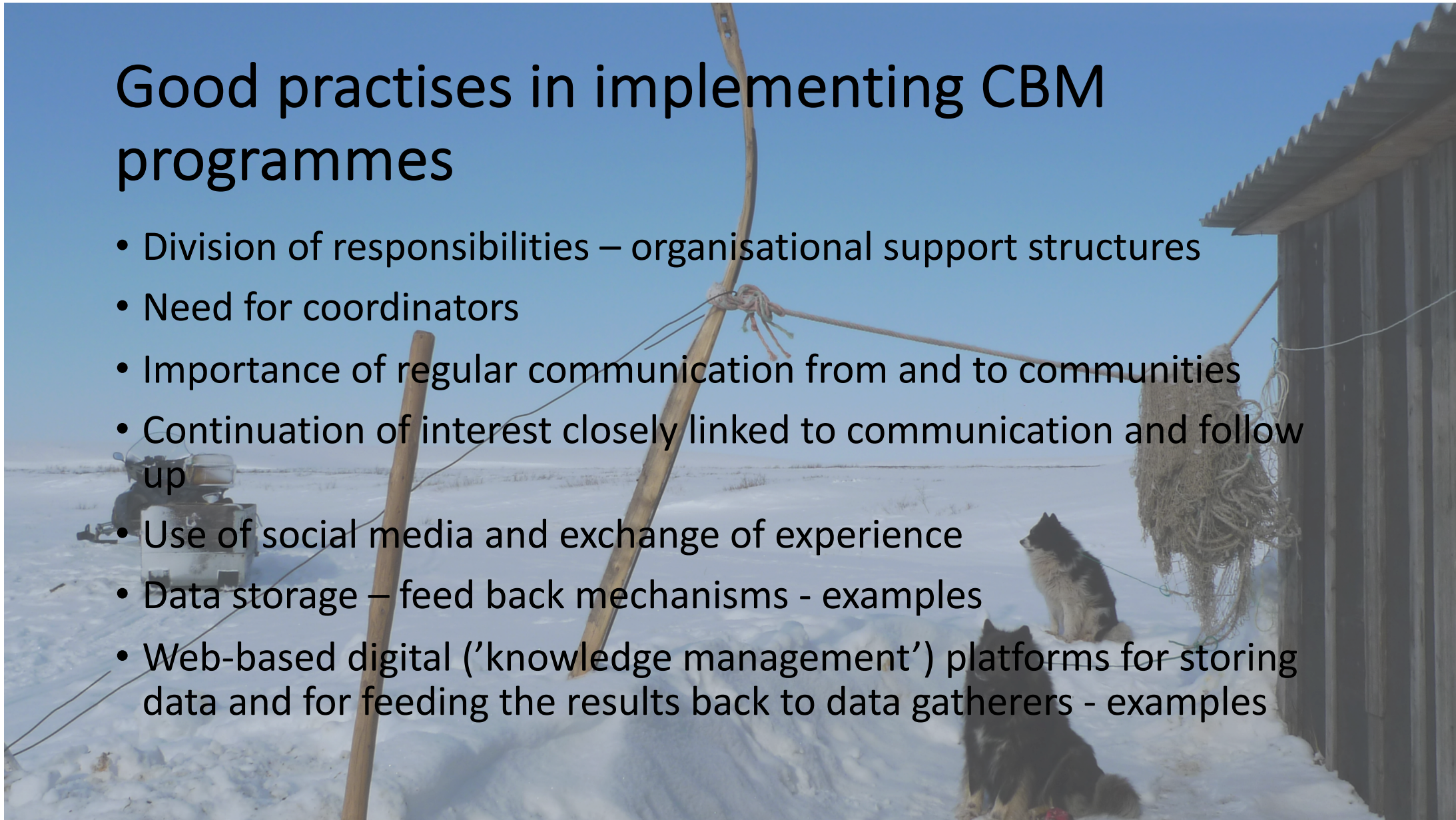
# Good practise in establishing CBM programmes

- Should address community priorities, questions and approaches
- Establishment process is facilitated and an open process with communities deciding – and good participation
- Consider what to monitor and what to do with the results including how to influence decision making
- Consider management set up and how to sustain the efforts – embed in structures
- Ensure simplicity and realistic workloads – guide in techniques
- Example on establishing (Yakutia)



# Good practises in implementing CBM programmes

- Division of responsibilities – organisational support structures
- Need for coordinators
- Importance of regular communication from and to communities
- Continuation of interest closely linked to communication and follow up
- Use of social media and exchange of experience
- Data storage – feed back mechanisms - examples
- Web-based digital ('knowledge management') platforms for storing data and for feeding the results back to data gatherers - examples





# Good practices in sustaining CBM programmes

- Key is to ensure relevance over time – sustaining interest – use of information for decision making
- Continuity in management at different levels – multiple staff/people involvement
- Information made available at relevant scales
- Incorporation in day to day activities – rewards systems in place
- Example Nunavut Community Based Monitoring Network





# Good practices in obtaining impacts through CBM

- Impacts possible on a wide range of decisions – most notably on fishing and hunting quotas, regulations, sustainable management options, food standards, hunting forecasts
- Using specific protocols/procedures to incorporate CBM-derived information is important – linked to action taking – also a challenge - need continued advocacy
- Impacts also improved with development of CBM policies
- Examples of impacts from a range of different CBM programmes  
Iceland, Greenland, Canada, Finland, Norway, Alaska



# Good practices in connecting with scientist-executed monitoring and global data banks

- Data with potential to inform at multiple levels – sharing important - important to decide if this is desirable – limited good practise
- Can be connected to form a combined data set or connected at management decision level to form two separate data sets
- Opportunities to connect with scientist-executed monitoring programmes – good examples from Canada, Alaska, Iceland (connected), Harvest/hunting statistics, Greenland (linked)
- Opportunities for contributing to global data repositories/ data banks – exists but very limited – significant scope for expansion





# Good practices in ensuring the quality of knowledge products

- Perception of CBM quality – barriers – increasing evidence of quality
- Measurements compare well, but also with potential biases and limitations – all monitoring prone to some of these
- Difference sample and perception based methods
- For perception-based methods it includes triangulation through independent focus groups, involvement of larger part of population, more methods applied, discuss potential biases and plan properly
- Involve primary resource users, use categories for resource abundance, ensure moderation/coordination, storage of data disaggregated, check
- Examples demonstrating quality of knowledge products (Yukon River Inter-Tribal Watershed Council – Pisuna - Inuvialuit Settlement Region Community-Based Monitoring Program)



# Good practices in addressing the rights of Indigenous and local communities

- CBM programmes closely related to co-management and contribute to indigenous and local communities rights through voice on land and resources
- Good example on impact on rights to land and resources (Thcho, CSIPN (Yakutia), SnowChange, PISUNA, Artic Eider Society)
- CBM programmes and ownership of knowledge – clarifying data use rights and access to information – need ownership and consent – good examples of access procedures (YRITWC, ABES, ELOKA, Arctic And Earth Signs, Imalirjiiit)





# Conclusions – Good Practises

- Establishing – involvement- representation – local priorities
- Implementing- support structures at all levels – move from policy to enact practise – platforms and data sharing
- Sustaining – must link to decision making- ensure staff involvement
- Impacts – the above - documenting management interventions – sharing among communities – advocacy
- Connecting to other monitoring – intertwined and parallel – global data links
- Quality of data – planning, consideration of bias, storage, carry out check – but also with a view of the goals of the programme
- Rights – directly related to land/ressource rights, importance of data overner rights